

BARN DOOR HARDWARE INSTALLATION GUIDE

FOR THE STRAIGHT STRAP, BENT STRAP, ARROW, DIAMOND AND HORSESHOE DESIGNS

SAFETY PRECAUTIONS

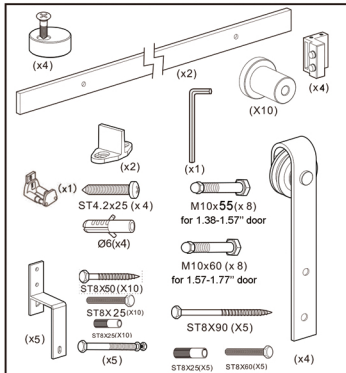
- Do not work alone. Two or more people are required.
- Use safe lifting techniques.
- Wear protective gear (e.g. safety glasses, gloves, ear protection, etc.).
- Always follow manufacturer's instructions when operating power tools

DOOR HANDLING AND EXPOSURE

- Allow doors to acclimate where it will be installed for at least 24 hours before installing.
- Store door in dry, well-ventilated area.
- Protect from exposure to direct sunlight during storage.

BARN DOOR HARDWARE KIT CONTENTS

KIT CONTENTS



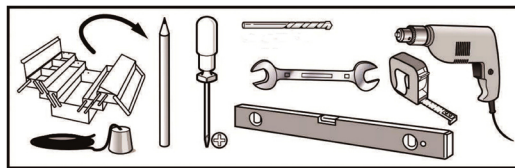
NOTE: THE ROLLER DESIGN SHOWN IN PICTURE MAY BE DIFFERENT THAN THE DESIGN PURCHASED



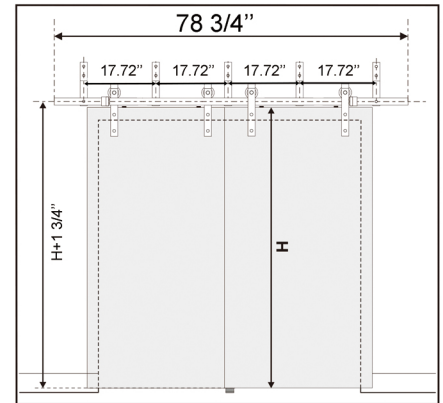
IMPORTANT - BEFORE YOU BEGIN

The following is a list of recommended tools and parts needed to properly complete your **BYREBOLT** hardware installation.

RECOMMENDED TOOLS



BARN DOOR DIAGRAM

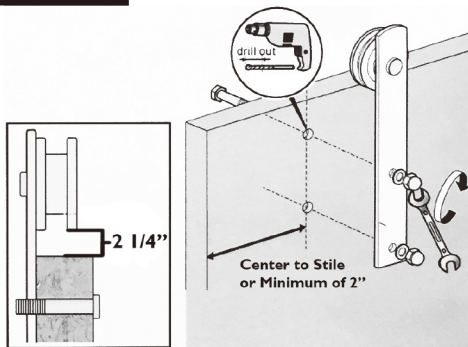


DRYWALL INSTALLATION

CAUTION: DO NOT ATTEMPT TO INSTALL THE RAIL DIRECTLY TO THE DRYWALL UNLESS SOLID BLOCKING IS INSTALLED AS THIS MAY NOT SUPPORT THE WEIGHT OF THE HARDWARE AND MOUNTED DOOR.

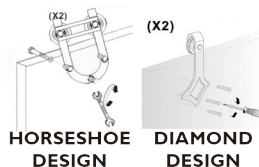
STEP 1

DOOR PREPARATION



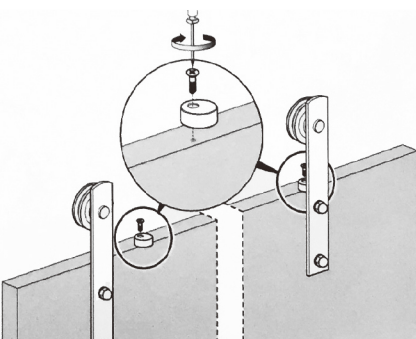
HORSESHOE & DIAMOND DESIGN INSTRUCTIONS: Determine roller location in field, on a per door basis. Position the roller at least 1-1/4" from door edge. Mark holes with a pencil and predrill holes, then secure into place. Repeat for second roller.

STRAIGHT STRAP, BENT STRAP & ARROW DESIGN INSTRUCTIONS: Position each strap to the front side of the door and center to the stile or a minimum of 2" from the edge of the door. Cut a piece of cardboard 2-1/4" and place between the wheel (inner groove) and the top of the door to correctly position the height of the straps. Mark holes with a pencil and predrill holes, then secure into place.



STEP 2

DOOR PREPARATION



Position and secure each anti-jump block at least 1" from the edge of the straps.

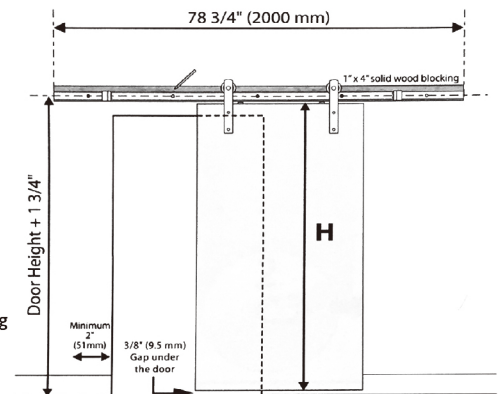
Keep loose to allow for rotation.

Will be tightened in step 6.

WALL & MOUNTING BOARD PREPARATION FOR DRYWALL APPLICATION

STEP 3

A. A solid wood Mounting Board is required to be mounted to the drywall before proceeding with the rail installation. Position the Mounting Board by measuring up from the door height (H) + 1-3/4" to the center of the rail/Mounting Board. Ensure there is a gap of 3/8" at the bottom. Lastly, ensure the Mounting Board is level and leave a minimum of 2" from the end of the Mounting Board to the side of the opening (as shown).



(Note: If installing with an opening for 80" standard door size with low ceiling, you may need to remove the top trim and cut the side trim horizontally along the height of the opening.)

B. Find the wall stud locations and mark them on the Mounting Board.

C. Install the Mounting Board using 3" trim screws or 10d trim nails into the marked stud locations.



**BYREBOLT
HARDWARE**

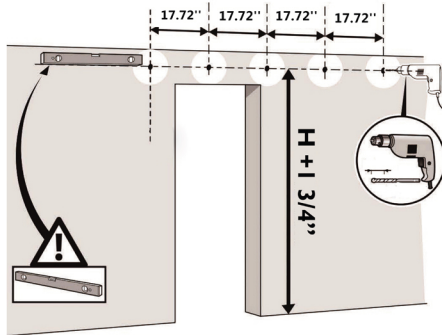
NOTE: THE ROLLER DESIGN SHOWN IN DIAGRAMS MAY VARY FROM THE DESIGN PURCHASED

BARN DOOR HARDWARE INSTALLATION GUIDE

FOR THE STRAIGHT STRAP, BENT STRAP, ARROW, DIAMOND AND HORSESHOE DESIGNS

DRYWALL INSTALLATION

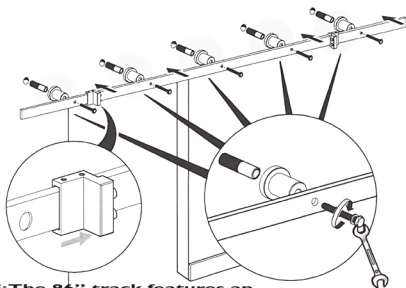
STEP 4 RAIL MOUNTING PREPARATION FOR DRYWALL APPLICATION



Center the rail on the Mounting Board as directed in Step 3. (Door Height + 1-3/4") Ensuring levelness, mark the holes using a pencil and pre-drill holes into the Mounting Board.

NOTE: The 96" track features an additional hole for wider door opening sizes.

STEP 5 RAIL & STOPPER INSTALLATION

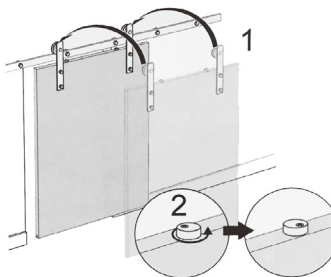


Install rail centered onto the Mounting Board, using the provided lag bolts and anchors if needed. Align each lag bolt and spacer to the rail holes, secure with a wrench. (Note: Wide end of round spacer goes toward wall)

A. Slide the door closed to correctly position the stops. Using the provided allen key, tighten into position to complete the installation of the Barn Door Kit.

B. Depending on your door size and wall opening, you may need to mount inside the first rail mounting lag bolt. You may need to remove the lag bolt to move the stopper to the correct position.

STEP 6 HANGING THE DOOR



Position the assembled door onto the secured rail and tighten each anti-jump block. Ensure all parts are operating correctly by sliding the door side to side.

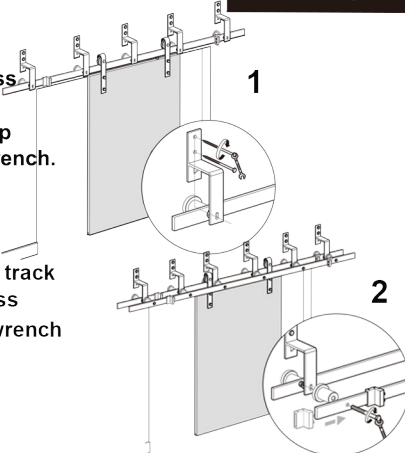
BYPASS & SECOND TRACK INSTALLATION

Position the bottom hole of the bypass in the front of the first lag bolt and spacer. Using a pencil and pre-drill top holes of the bracket. Secure with a wrench.

Position second track in front of first track. Align each lag bolt, spacer and bypass bracket bottom holes, secure with a wrench.

Install stoppers as step 5

STEP 7



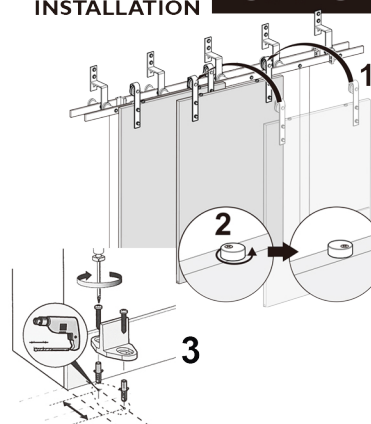
HANGING THE DOOR & FLOOR-MOUNTED DOOR GUIDE INSTALLATION

Position the assembled door onto the secured rail and tighten each anti-jump block. Ensure all parts are operating correctly by sliding the door side to side.

Once the door is plumb, position the door-mounted door guide inside the kerf at bottom of door close to the opening. Slide the door side to side to ensure functionality for final placement then mark holes with a pencil and pre-drill the holes.

If drilling into a concrete floor, use the provided anchors.

STEP 8

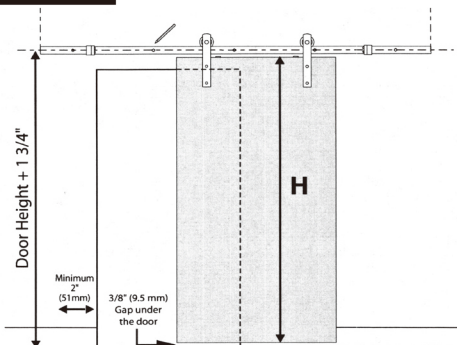


Bypass package:



CONCRETE INSTALLATION

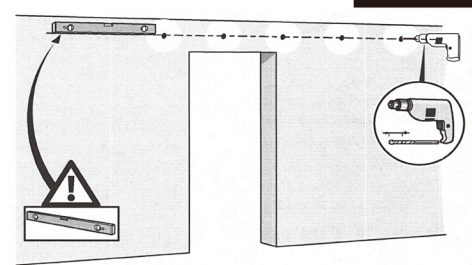
STEP 1 WALL PREPARATION - CONCRETE



Position the rail by measuring up from the door height (H) + 1-3/4" to the center of the rail. Ensure there is a gap of 3/8" at the bottom. Lastly, ensure the rail is level and leave a minimum of 2 1/4" from the end of the rail to the side of the opening (as shown). If installing with an opening for 80" standard door size, remove the top trim and cut the side trim horizontally along the height of the opening.

WALL PREPARATION - CONCRETE

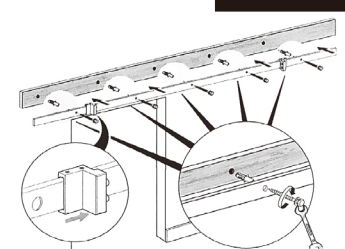
Position the rail in place ensuring that it is level, mark the holes in the rail with a pencil and pre-drill 5/16" hole into the concrete.



RAIL INSTALLATION STEP 3

When installing directly into concrete, insert using the provided anchors and carriage bolts (with washers). Make sure to un-screw to separate the carriage bolt and anchor to install correctly, securing with a wrench. Be sure to install the stops either side of the rail inside the first hole.

*To complete the concrete installation, continue with steps 6 thru 8 under drywall installation on the previous pages.



**BYREBOLT
HARDWARE**



NOTE: THE ROLLER DESIGN SHOWN IN DIAGRAMS MAY VARY FROM THE DESIGN PURCHASED

BARN DOOR HARDWARE INSTALLATION GUIDE

FOR THE TOP MOUNT DESIGN

SAFETY PRECAUTIONS

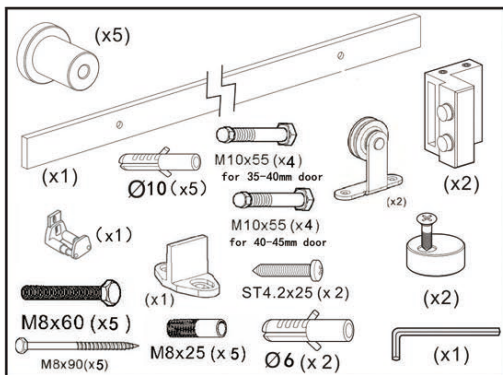
- Do not work alone. Two or more people are required.
- Use safe lifting techniques.
- Wear protective gear (e.g. safety glasses, gloves, ear protection, etc.).
- Always follow manufacturer's instructions when operating power tools.

DOOR HANDLING AND EXPOSURE

- Allow doors to acclimate where it will be installed for at least 24 hours before installing.
- Store door in dry, well-ventilated area.
- Protect from exposure to direct sunlight during storage.

BARN DOOR HARDWARE KIT CONTENTS

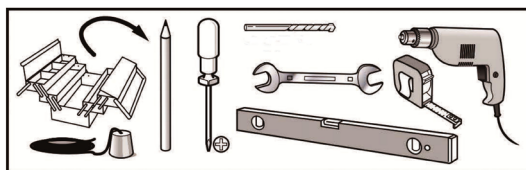
KIT CONTENTS



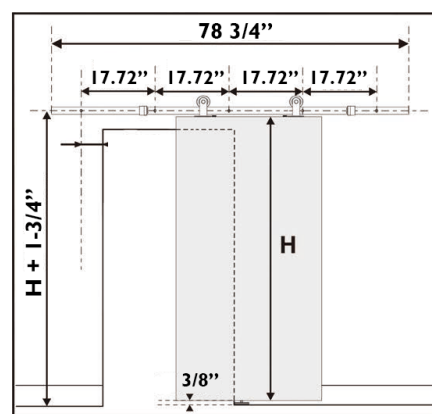
IMPORTANT - BEFORE YOU BEGIN

The following is a list of recommended tools and parts needed to properly complete your **BYREBOLT** hardware installation.

RECOMMENDED TOOLS



BARN DOOR DIAGRAM



DRYWALL INSTALLATION

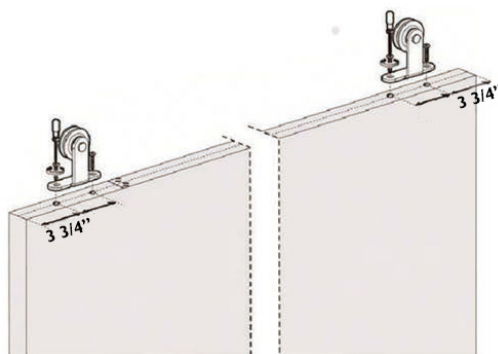


CAUTION: DO NOT ATTEMPT TO INSTALL THE RAIL DIRECTLY TO THE DRYWALL UNLESS SOLID BLOCKING IS INSTALLED AS THIS MAY NOT SUPPORT THE WEIGHT OF THE HARDWARE AND MOUNTED DOOR.



STEP 1

DOOR PREPARATION



Position each roller a minimum of 3 3/4" from the edge of the door.

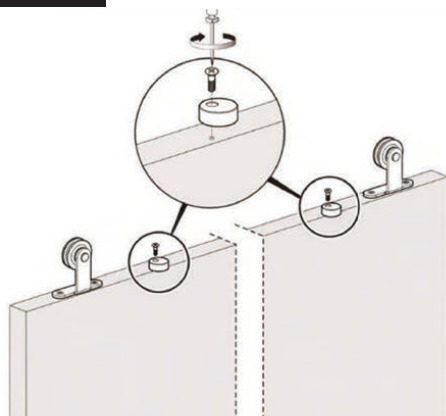
Mark holes with a pencil and predrill holes, then secure into place.

Mark the second hole with the strap in place to ensure the strap is secure.

Repeat for second strap.

STEP 2

DOOR PREPARATION



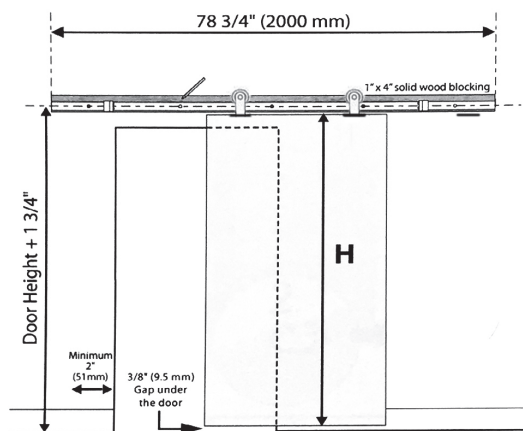
Position and secure each anti-jump block at least 1" from the edge of the straps.

Keep loose to allow for rotation.

Will be tightened in step 6.

WALL & MOUNTING BOARD PREPARATION FOR DRYWALL APPLICATION

STEP 3



A. A solid wood Mounting Board is required to be mounted to the drywall before proceeding with the rail installation. Position the Mounting Board by measuring up from the door height (H) + 1-3/4" to the center of the rail/Mounting Board. Ensure there is a gap of 3/8" at the bottom. Lastly, ensure the Mounting Board is level and leave a minimum of 2" from the end of the Mounting Board to the side of the opening (as shown).

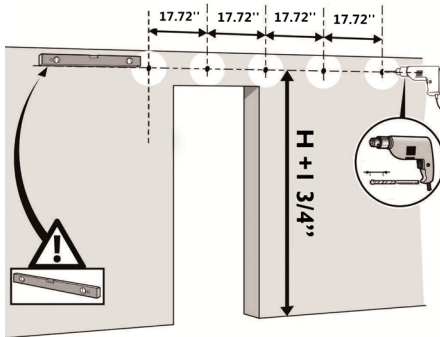
(Note: If installing with an opening for 80" standard door size with low ceiling, you may need to remove the top trim and cut the side trim horizontally along the height of the opening.)

B. Find the wall stud locations and mark them on the Mounting Board.

C. Install the Mounting Board using 3" trim screws or 10d trim nails into the marked stud locations.

DRYWALL INSTALLATION

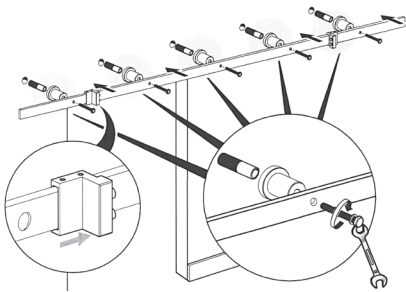
STEP 4 RAIL MOUNTING PREPARATION FOR DRYWALL APPLICATION



Center the rail on the Mounting Board as directed in Step 3. (Door Height + 1-3/4") Ensuring levelness, mark the holes using a pencil and pre-drill holes into the Mounting Board.

NOTE: The 96" track features an additional hole for wider door opening sizes.

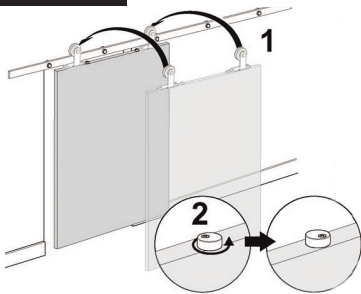
STEP 5 RAIL INSTALLATION



Install rail centered onto the Mounting Board, using the provided lag bolts and anchors if needed. Align each lag bolt and spacer to the rail holes, secure with a wrench. (Note: Wide end of round spacer goes toward wall)

NOTE: The 96" track requires an additional 6th hole to be drilled.

STEP 6 HANGING THE DOOR

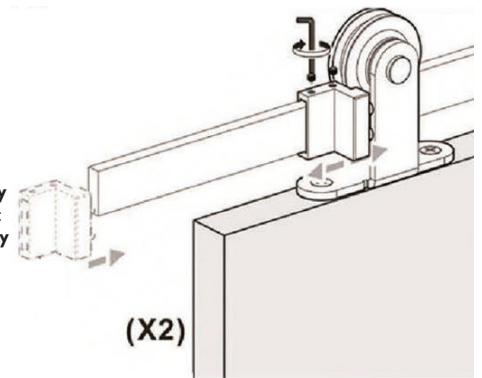


Position the assembled door onto the secured rail and tighten each anti-jump block. Ensure all parts are operating correctly by sliding the door side to side.

STOPPER INSTALLATION STEP 7

A. Slide the door closed to correctly position the stops. Using the provided allen key, tighten into position to complete the installation of the Barn Door Kit.

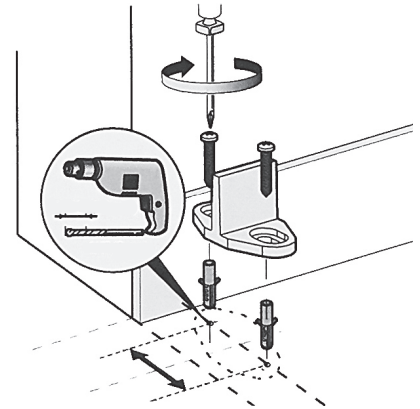
B. Depending on your door size and wall opening, you may need to mount inside the first rail mounting lag bolt. You may need to remove the lag bolt to move the stopper to the correct position.



FLOOR-MOUNTED DOOR GUIDE INSTALLATION STEP 8

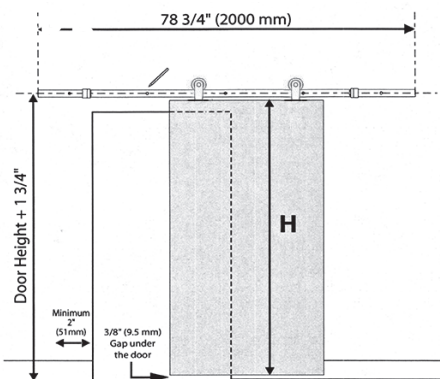
Once the door is plumb, position the door-mounted door guide inside the kerf at bottom of door close to the opening. Slide the door side to side to ensure functionality for final placement then mark holes with a pencil and pre-drill the holes.

If drilling into a concrete floor, use the provided anchors.



CONCRETE INSTALLATION

STEP 1 WALL PREPARATION - CONCRETE



Position the rail by measuring up from the door height (H) + 1-3/4" to the center of the rail.

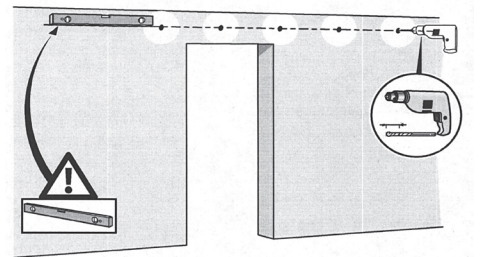
Ensure there is a gap of 3/8" at the bottom.

Lastly, ensure the rail is level and leave a minimum of 2 1/4" from the end of the rail to the side of the opening (as shown).

If installing with an opening for 80" standard door size, remove the top trim and cut the side trim horizontally along the height of the opening.

WALL PREPARATION - CONCRETE STEP 2

Position the rail in place ensuring that it is level, mark the holes in the rail with a pencil and pre-drill 5/16" hole into the concrete.



RAIL INSTALLATION STEP 3

When installing directly into concrete, insert using the provided anchors and carriage bolts (with washers). Make sure to un-screw to separate the carriage bolt and anchor to install correctly, securing with a wrench. Be sure to install the stops either side of the rail inside the first hole.

*To complete the concrete installation, continue with steps 6 thru 8 under drywall installation on the previous pages.

